

Survey for Parents and Guardians

2023–2024

BLACK = ALL

RED = Remote Only

GREEN = In-School Only

This survey is an opportunity for you to help this school by sharing your opinions about it. Your opinions are important, and the school is interested in hearing them.

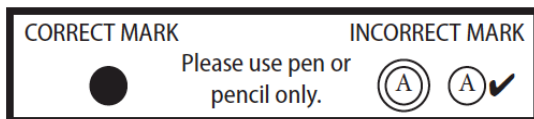
If you have more than one child who is enrolled at this school, please think about the oldest of these children as you answer these questions.

Answer all the questions based on your experiences with this school only. Remember, we appreciate your honest opinions.

Do not write your name on this survey. No one can tell who filled out this survey. Your answers will be completely private and unknown to others.

Please begin by writing the name of the school your child attends on the line below:

School Name: _____



Respond for your oldest child who is enrolled in the school.

1. Which of the following **best describes** your child's school schedule **during the past 30 days?**
 - (A) My child went to school in person at his/her school building for the entire day, Monday through Friday. **[In-School Model]**
 - (B) My child participated in school from home for the entire day on most or all weekdays and did not go to school in person. **[Remote Learning Model]**

The following questions are about yourself and your child.

2. I am a...

- (A) parent of the child enrolled at this school.
- (B) foster parent of the child enrolled at this school.
- (C) grandparent, other relative, and/or legal guardian of the child enrolled at this school.
- (D) not applicable, not sure, or decline to answer

3. Is your child in any of these programs? *(Mark all that apply.)*

- (A) Special Education Program or has had an Individual Education Plan (IEP)
- (B) English Language Development (for children learning English)
- (C) Gifted and Talented Education (GATE) or takes Honors/Advanced Placement classes
- (D) Not applicable, not sure, or decline to answer

4. What is your race or ethnicity?

- (A) American Indian or Alaska Native
- (B) Asian or Asian American
- (C) Black or African American (Not Hispanic or Latinx)
- (D) Filipino
- (E) Hispanic or Latinx
- (F) Native Hawaiian or Pacific Islander
- (G) White (Not Hispanic/Latinx)
- (H) Two or more races/ethnicities
- (I) Not applicable, not sure, or decline to answer

5. In what grade is your child?

- | | | |
|--|---|--|
| <input type="radio"/> (A) Pre-/Transitional Kindergarten | <input type="radio"/> (G) 5 th grade | <input type="radio"/> (L) 10 th grade |
| <input type="radio"/> (B) Kindergarten | <input type="radio"/> (H) 6 th grade | <input type="radio"/> (M) 11 th grade |
| <input type="radio"/> (C) 1 st grade | <input type="radio"/> (I) 7 th grade | <input type="radio"/> (N) 12 th grade |
| <input type="radio"/> (D) 2 nd grade | <input type="radio"/> (J) 8 th grade | <input type="radio"/> (O) Other |
| <input type="radio"/> (E) 3 rd grade | <input type="radio"/> (K) 9 th grade | <input type="radio"/> (P) Ungraded |
| <input type="radio"/> (F) 4 th grade | | |

6. Does one or more of your children participate in this school's afterschool program? (Respond for your child that most frequently participates in the afterschool program.)

- (A) No
- (B) Yes – 1 day a week
- (C) Yes – 2 days a week
- (D) Yes – 3 days a week
- (E) Yes – 4 days a week
- (F) Yes – 5 days a week

Based on your experience, how strongly do you agree or disagree with the following statements about this school?

<i>This school...</i>	Strongly Agree	Agree	Disagree	Strongly Disagree	Don't Know/NA
7. promotes academic success for all students.	(A)	(B)	(C)	(D)	(E)
8. treats all students with respect.	(A)	(B)	(C)	(D)	(E)
9. gives all students opportunities to “make a difference” by helping other people, the school, or the community.	(A)	(B)	(C)	(D)	(E)
10. keeps me well-informed about school activities.	(A)	(B)	(C)	(D)	(E)
11. provides quality counseling or other ways to help students with social or emotional needs.	(A)	(B)	(C)	(D)	(E)
12. is a supportive and inviting place for students to learn.	(A)	(B)	(C)	(D)	(E)
13. communicates the importance of respecting different cultural beliefs and practices.	(A)	(B)	(C)	(D)	(E)
14. provides instructional materials that reflect my child’s culture, ethnicity, and identity.	(A)	(B)	(C)	(D)	(E)
15. enforces school rules equally for my child and all students.	(A)	(B)	(C)	(D)	(E)
16. has quality programs for my child’s talents, gifts, or special needs.	(A)	(B)	(C)	(D)	(E)
17. is a safe place for my child.	(A)	(B)	(C)	(D)	(E)
18. promptly responds to my phone calls, messages, or e-mails.	(A)	(B)	(C)	(D)	(E)

Based on your experience, how strongly do you agree or disagree with the following statements about this school?

<i>This school...</i>	<u>Strongly Agree</u>	<u>Agree</u>	<u>Disagree</u>	<u>Strongly Disagree</u>	<u>Don't Know/NA</u>
19. encourages me to be an active partner with the school in educating my child.	(A)	(B)	(C)	(D)	(E)
20. actively seeks the input of parents before making important decisions.	(A)	(B)	(C)	(D)	(E)
21. has clean and well-maintained facilities and properties.	(A)	(B)	(C)	(D)	(E)
22. provides high quality instruction to my child.	(A)	(B)	(C)	(D)	(E)
23. motivates students to learn.	(A)	(B)	(C)	(D)	(E)
24. has teachers who go out of their way to help students.	(A)	(B)	(C)	(D)	(E)
25. has adults who really care about students.	(A)	(B)	(C)	(D)	(E)
26. has high expectations for all students.	(A)	(B)	(C)	(D)	(E)
27. encourages students to care about how others feel.	(A)	(B)	(C)	(D)	(E)
28. Does this school ban tobacco use and vaping on school property and at school sponsored events?					
	(A) No				
	(B) Yes				
	(C) Don't know				

How strongly do you agree or disagree with the following statements about this school?

	<u>Strongly Agree</u>	<u>Agree</u>	<u>Disagree</u>	<u>Strongly Disagree</u>	<u>Don't Know/NA</u>
29. Teachers communicate with parents about what students are expected to learn in class.	(A)	(B)	(C)	(D)	(E)

How strongly do you agree or disagree with the following statements about this school?

		Strongly <u>Agree</u>	<u>Agree</u>	<u>Disagree</u>	Strongly <u>Disagree</u>	Don't <u>Know/NA</u>
30.	Parents feel welcome to participate at this school.	(A)	(B)	(C)	(D)	(E)
31.	School staff treat parents with respect.	(A)	(B)	(C)	(D)	(E)
32.	School staff take parent concerns seriously.	(A)	(B)	(C)	(D)	(E)

Based on your experience, how much of a problem at this school is...

		<u>Not a Problem</u>	<u>Small Problem</u>	<u>Some- what a Problem</u>	<u>Large Problem</u>	<u>Don't Know/NA</u>
33.	student tobacco use (cigarette smoking and/or smokeless tobacco such as dip, chew, or snuff)?	(A)	(B)	(C)	(D)	(E)
34.	student vaping or e-cigarette use?	(A)	(B)	(C)	(D)	(E)
35.	student alcohol and drug use?	(A)	(B)	(C)	(D)	(E)
36.	harassment or bullying of students?	(A)	(B)	(C)	(D)	(E)
37.	physical fighting between students?	(A)	(B)	(C)	(D)	(E)
38.	racial/ethnic conflict among students?	(A)	(B)	(C)	(D)	(E)
39.	students not respecting staff?	(A)	(B)	(C)	(D)	(E)
40.	gang-related activity?	(A)	(B)	(C)	(D)	(E)
41.	weapons possession?	(A)	(B)	(C)	(D)	(E)
42.	vandalism (including graffiti)?	(A)	(B)	(C)	(D)	(E)

Since the beginning of this school year, has any adult in your child's household done any of the following things at your child's school?

		<u>No</u>	<u>Yes</u>
43.	Attended a school or class event, such as a play, dance, sports event, or science fair.	(A)	(B)
44.	Served as a volunteer in this child's classroom or elsewhere in the school. [ELEMENTARY/MIDDLE ONLY]	(A)	(B)
45.	Attended a general school meeting, for example, an open house, or a back-to-school night.	(A)	(B)
46.	Participated in a meeting of the parent-teacher organization or association.	(A)	(B)

Since the beginning of this school year, has any adult in your child's household done any of the following things at your child's school?

	<u>No</u>	<u>Yes</u>
47. Participated in a regularly scheduled parent-teacher conference with the child's teacher. [ELEMENTARY/MIDDLE ONLY]	(A)	(B)
48. Participated in fundraising for the school.	(A)	(B)
49. Served on a school committee.	(A)	(B)
50. Met with a school counselor in person or remotely.	(A)	(B)

How well has this child's school been doing the following things during the school year?

	<u>Very Well</u>	<u>Just Okay</u>	<u>Not Very Well</u>	<u>Does Not Do It At All</u>	<u>Don't Know/NA</u>
51. Letting you know how your child is doing in school between report cards.	(A)	(B)	(C)	(D)	(E)
52. Providing information about how to help your child with homework. [ELEMENTARY/MIDDLE ONLY]	(A)	(B)	(C)	(D)	(E)
53. Providing information about why your child is placed in particular groups or classes.	(A)	(B)	(C)	(D)	(E)
54. Providing information on your expected role at your child's school.	(A)	(B)	(C)	(D)	(E)
55. Providing information on how to help your child plan for college or vocational school. [MIDDLE/HIGH SCHOOL ONLY]	(A)	(B)	(C)	(D)	(E)

The next question asks about your child’s experiences participating in school from home.

Participating in school from home means that, instead of going to a school building in-person to learn and complete schoolwork, your child completed all schoolwork and learning from home.

56. Last week, how many weekdays did your child participate in **school from home**?

- (A) 0 days
- (B) 1 day
- (C) 2 days
- (D) 3 days
- (E) 4 days
- (F) 5 days
- (G) Not sure

As you answer these questions, please think about you and your child’s experience right now.

How strongly do you agree or disagree with the following statements?

	Strongly Agree	Agree	Disagree	Strongly Disagree	Not sure/ NA
57. My child’s teachers are responsive to my child’s social and emotional needs.	(A)	(B)	(C)	(D)	(E)
58. Support staff like counselors, psychologists, and wellness staff are available to my child if he/she needs them.	(A)	(B)	(C)	(D)	(E)
59. My child is receiving adequate instruction from teachers to support assigned work.	(A)	(B)	(C)	(D)	(E)
60. My child has opportunities to connect and interact with classmates during remote learning.	(A)	(B)	(C)	(D)	(E)
61. My child is motivated to complete the schoolwork she/he is assigned.	(A)	(B)	(C)	(D)	(E)
62. My child feels hopeful about the future.	(A)	(B)	(C)	(D)	(E)

As you answer these questions, please think about you and your child’s experience right now.

How strongly do you agree or disagree with the following statements?

	Strongly Agree	Agree	Disagree	Strongly Disagree	Not sure/ NA
63. Our school provides parents with advice and resources to support my child’s social and emotional needs.	Ⓐ	Ⓑ	Ⓒ	Ⓓ	Ⓔ
64. Our school/district has done a good job keeping me informed about remote learning.	Ⓐ	Ⓑ	Ⓒ	Ⓓ	Ⓔ
65. On a scale of 0 to 10, with 0 being extremely unsuccessful and 10 being extremely successful, how successful has remote or distance learning been for you and your child during the 2023–24 school year?					
Ⓐ 0 – Extremely unsuccessful					
Ⓑ 1					
Ⓒ 2					
Ⓓ 3					
Ⓔ 4					
Ⓕ 5					
Ⓖ 6					
Ⓗ 7					
Ⓘ 8					
Ⓝ 9					
Ⓚ 10 – Extremely successful					