

Survey for Parents and Guardians**2020-2021****Remote Only**

This survey is an opportunity for you to help this school by sharing your opinions about it. Your opinions are important, and the school is interested in hearing them.

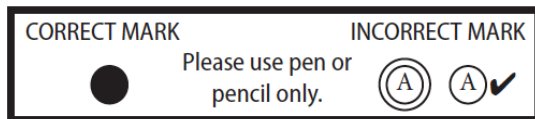
If you have more than one child who is enrolled at this school, please think about the oldest of these children as you answer these questions.

Answer all the questions based on your experiences with this school only. Remember, we appreciate your honest opinions.

Do not write your name on this survey. No one can tell who filled out this survey. Your answers will be completely private and unknown to others.

Please begin by writing the name of the school your child attends on the line below:

School Name: _____

**Your Child's School Schedule**

This year, some students have returned to their school buildings to attend school. Some students are working from home and not going to the school buildings at all. And some students are doing a combination of both.

Respond for your oldest child who is enrolled in the school.

1. **Which of the following best describes your child's school schedule during the past 30 days?**

- (A) My child went to school in person at his/her school building for the entire day, Monday through Friday. **[In-School Model]**
- (B) My child participated in school from home for the entire day on most or all weekdays and did not go to school in person. **[Remote Learning Model]**
- (C) My child went to school in person at her/his school building for the entire day on some weekdays and participated in school from home on other weekdays. **[Hybrid Model]**
- (D) My child went to school in person at his/her school building for half of the day and participated in classes from home during the other half of the day on most or all weekdays. **[Hybrid Model]**

The following questions are about yourself and your child.

2. I am a...

- (A) parent of the child enrolled at this school.
- (B) foster parent of the child enrolled at this school.
- (C) grandparent, other relative, and/or legal guardian of the child enrolled at this school.
- (D) not applicable, not sure, or decline to answer

3. Is your child in any of these programs? *(Mark all that apply.)*

- (A) Special Education Program or has had an Individual Education Plan (IEP)
- (B) English Language Development (for children learning English)
- (C) Gifted and Talented Education (GATE) or takes Honors/Advanced Placement classes
- (D) Not applicable, not sure, or decline to answer

4. What is your race or ethnicity?

- (A) American Indian or Alaska Native
- (B) Asian or Asian American
- (C) Black or African American (Not Hispanic or Latinx)
- (D) Filipino
- (E) Hispanic or Latinx
- (F) Native Hawaiian or Pacific Islander
- (G) White (Not Hispanic/Latinx)
- (H) Two or more races/ethnicities
- (I) Not applicable, not sure, or decline to answer

5. Did your child receive a free or reduced-price breakfast or lunch at school last year?

- (A) No
- (B) Yes
- (C) Not applicable, not sure, or decline to answer

6. In what grade is your child?

- (A) Pre-/Transitional Kindergarten
 - (B) Kindergarten
 - (C) 1st grade
 - (D) 2nd grade
 - (E) 3rd grade
 - (F) 4th grade
- (G) 5th grade
 - (H) 6th grade
 - (I) 7th grade
 - (J) 8th grade
 - (K) 9th grade
- (L) 10th grade
 - (M) 11th grade
 - (N) 12th grade
 - (O) Other
 - (P) Ungraded

Based on your experience, how strongly do you agree or disagree with the following statements about this school?

This school...

	Strongly Agree	Agree	Disagree	Strongly Disagree	Don't Know/NA
7. promotes academic success for all students.	(A)	(B)	(C)	(D)	(E)
8. treats all students with respect.	(A)	(B)	(C)	(D)	(E)
9. provides quality counseling or other ways to help students with social or emotional needs.	(A)	(B)	(C)	(D)	(E)
10. communicates the importance of respecting different cultural beliefs and practices.	(A)	(B)	(C)	(D)	(E)
11. provides instructional materials that reflect my child's culture, ethnicity, and identity.	(A)	(B)	(C)	(D)	(E)
12. has quality programs for my child's talents, gifts, or special needs.	(A)	(B)	(C)	(D)	(E)
13. promptly responds to my phone calls, messages, or e-mails.	(A)	(B)	(C)	(D)	(E)
14. encourages me to be an active partner with the school in educating my child.	(A)	(B)	(C)	(D)	(E)
15. actively seeks the input of parents before making important decisions.	(A)	(B)	(C)	(D)	(E)
16. provides high quality instruction to my child.	(A)	(B)	(C)	(D)	(E)
17. motivates students to learn.	(A)	(B)	(C)	(D)	(E)
18. has teachers who go out of their way to help students.	(A)	(B)	(C)	(D)	(E)

Based on your experience, how strongly do you agree or disagree with the following statements about this school?

This school...

	Strongly Agree	Agree	Disagree	Strongly Disagree	Don't Know/NA
19. has adults who really care about students.	(A)	(B)	(C)	(D)	(E)
20. has high expectations for all students.	(A)	(B)	(C)	(D)	(E)
21. encourages students to care about how others feel.	(A)	(B)	(C)	(D)	(E)

How strongly do you agree or disagree with the following statements about this school?

	Strongly Agree	Agree	Disagree	Strongly Disagree	Don't Know/NA
22. Teachers communicate with parents about what students are expected to learn in class.	(A)	(B)	(C)	(D)	(E)
23. Parents feel welcome to participate at this school.	(A)	(B)	(C)	(D)	(E)
24. School staff treat parents with respect.	(A)	(B)	(C)	(D)	(E)
25. School staff take parent concerns seriously.	(A)	(B)	(C)	(D)	(E)

Since the beginning of this school year, has any adult in your child's household done any of the following things at your child's school?

	No	Yes
26. Participated in a meeting of the parent-teacher organization or association.	(A)	(B)
27. Participated in a regularly scheduled parent-teacher conference with the child's teacher. [ELEMENTARY/MIDDLE ONLY]	(A)	(B)
28. Participated in fundraising for the school.	(A)	(B)
29. Served on a school committee.	(A)	(B)
30. Met with a guidance counselor in person or remotely.	(A)	(B)

How well has this child's school been doing the following things during the school year?

	Very Well	Just Okay	Not Very Well	Does Not Do It At All	Don't Know/NA
31. Letting you know how your child is doing in school between report cards.	(A)	(B)	(C)	(D)	(E)
32. Providing information about how to help your child with homework. [ELEMENTARY/MIDDLE ONLY]	(A)	(B)	(C)	(D)	(E)
33. Providing information about why your child is placed in particular groups or classes.	(A)	(B)	(C)	(D)	(E)
34. Providing information on your expected role at your child's school.	(A)	(B)	(C)	(D)	(E)
35. Providing information on how to help your child plan for college or vocational school. [MIDDLE/HIGH SCHOOL ONLY]	(A)	(B)	(C)	(D)	(E)
36. How often does your child talk with friends using a phone, tablet, laptop, or computer?					
(A) Daily					
(B) A few times a week					
(C) About once a week					
(D) Less than once a week					
(E) Not at all					
(F) Not sure/NA					

Below are things that can make remote learning difficult. Please select any that make remote learning more difficult for you and/or your child. (Mark All That Apply.)

	Select if a problem
37. We don't have a computer or tablet or have enough devices at home.	(A)
38. We don't have internet access at home.	(A)
39. Our internet access is sometimes too slow or doesn't always work.	(A)
40. Sometimes we don't know how to use the remote/distance learning software.	(A)
41. Materials are often not provided in our first/native language.	(A)
42. My child doesn't always have a quiet, undisturbed space to do schoolwork.	(A)
43. My child is too young to participate in remote learning on his/her own without adult supervision.	(A)
44. My child has responsibilities at home that prevent him/her from participating.	(A)

Below are things that can make remote learning difficult. Please select any that make remote learning more difficult for you and/or your child. (Mark All That Apply.)

Select if a
problem

45. My child has a disability or needs accommodations.

A

46. None of these apply to me or my child.

A

As you answer these questions, please think about your child's situation right now.

47. Last week, how many days did your child attend school in-person?

- A 0 days
- B 1 day
- C 2 days
- D 3 days
- E 4 days
- F 5 days
- G Not sure

The next set of questions ask about your child's experiences participating in school from home.

Participating in school from home means that, instead of going to a school building in-person to learn and complete schoolwork, your child completed all schoolwork and learning from home.

48. Last week, how many weekdays did your child participate in **school from home**?

- A 0 days
- B 1 day
- C 2 days
- D 3 days
- E 4 days
- F 5 days
- G Not sure

49. On days that your child participates in **school from home**, how often does he/she participate in at least one class using video conferencing that allows the teacher to talk to students?
- (A) 0 days
 - (B) 1 day
 - (C) 2 days
 - (D) 3 days
 - (E) 4 days
 - (F) 5 days
 - (G) Not sure
 - (H) The school/district does not use video conferencing for instruction.
50. On days that your child participates in **school from home**, how much of the day does he/she spend learning and completing schoolwork on the average day?
- (A) Less than 1 hour
 - (B) Between 1 and 2 hours
 - (C) Between 2 and 3 hours
 - (D) Between 3 and 4 hours
 - (E) Between 4 and 5 hours
 - (F) More than 5 hours

As you answer these questions, please think about you and your child’s experience right now.

How strongly do you agree or disagree with the following statements?

	Strongly Agree	Agree	Disagree	Strongly Disagree	Not sure/ NA
51. The school remote learning program is requiring too much of parents .	(A)	(B)	(C)	(D)	(E)
52. The school remote learning program is requiring too much of students.	(A)	(B)	(C)	(D)	(E)
53. The school remote learning program is requiring too little of students.	(A)	(B)	(C)	(D)	(E)

How strongly do you agree or disagree with the following statements?

	Strongly Agree	Agree	Disagree	Strongly Disagree	Not sure/ NA
54. My child's teachers have checked in with her/him personally at least once a month.	(A)	(B)	(C)	(D)	(E)
55. My child's teachers are responsive to my child's social and emotional needs.	(A)	(B)	(C)	(D)	(E)
56. Support staff like counselors, psychologists, and wellness staff are available to my child if he/she needs them.	(A)	(B)	(C)	(D)	(E)
57. My child is receiving adequate instruction from teachers to support assigned work.	(A)	(B)	(C)	(D)	(E)
58. My child is receiving regular feedback on the schoolwork she/he submits.	(A)	(B)	(C)	(D)	(E)
59. My child has opportunities to connect and interact with classmates during remote learning.	(A)	(B)	(C)	(D)	(E)
60. My child knows what schoolwork is expected to be completed each day.	(A)	(B)	(C)	(D)	(E)
61. My child is motivated to complete the schoolwork she/he is assigned.	(A)	(B)	(C)	(D)	(E)
62. My child feels hopeful about the future.	(A)	(B)	(C)	(D)	(E)
63. Our school provides parents with advice and resources to support my child's social and emotional needs .	(A)	(B)	(C)	(D)	(E)
64. Our school/district has done a good job keeping me informed about remote learning.	(A)	(B)	(C)	(D)	(E)
65. My child's school provides parents with advice and resources to support my child's learning .	(A)	(B)	(C)	(D)	(E)
66. I am satisfied with the way learning is structured at my child's school right now (in-school, hybrid, remote learning).	(A)	(B)	(C)	(D)	(E)
67. I think my child should spend more time learning in-person at school right now.	(A)	(B)	(C)	(D)	(E)

Below are some concerns parents may have raised about their children as a result of the novel coronavirus (COVID-19). For each one, please indicate how concerning it is to you personally.

How concerned are you about...

	Not at all concerned	Slightly concerned	Somewhat concerned	Quite concerned	Extremely concerned
68. your child's safety while he/she is at home?	(A)	(B)	(C)	(D)	(E)
69. your child's safety when he/she is at school or returns to school for in-person learning?	(A)	(B)	(C)	(D)	(E)
70. your child falling behind academically?	(A)	(B)	(C)	(D)	(E)
71. providing financially for your child?	(A)	(B)	(C)	(D)	(E)
72. running out of food because of a lack of money or other resources?	(A)	(B)	(C)	(D)	(E)
73. your child's mental well-being?	(A)	(B)	(C)	(D)	(E)
74. your child not being able to interact with teachers?	(A)	(B)	(C)	(D)	(E)
75. your child not being able to interact with other students?	(A)	(B)	(C)	(D)	(E)
76. childcare or supervision for your child while you are at work or working from home?	(A)	(B)	(C)	(D)	(E)
77. your child having a regular schedule for schoolwork, play, and sleep?	(A)	(B)	(C)	(D)	(E)
78. your child feeling bored or under-stimulated?	(A)	(B)	(C)	(D)	(E)
79. your child getting enough physical exercise?	(A)	(B)	(C)	(D)	(E)
80. your child getting enough sleep?	(A)	(B)	(C)	(D)	(E)
81. your child feeling secure during this period of uncertainty?	(A)	(B)	(C)	(D)	(E)
82. your child being on track to graduate from high school?	(A)	(B)	(C)	(D)	(E)
83. your child staying on track to go to college?	(A)	(B)	(C)	(D)	(E)

84. On a scale of 0 to 10, with 0 being extremely unsuccessful and 10 being extremely successful, how successful has remote or distance learning been for you and your child during the 2020-21 school year?

- Ⓐ 0 – Extremely unsuccessful
- Ⓑ 1
- Ⓒ 2
- Ⓓ 3
- Ⓔ 4
- Ⓕ 5
- Ⓖ 6
- Ⓗ 7
- Ⓘ 8
- Ⓙ 9
- Ⓚ 10 – Extremely successful

FOR REFERENCE ONLY
DO NOT COPY